



Confectionery
Product Line



MFG
TRAY

Made in the
USA



OPTIMAL PERFORMANCE AND VALUE



MFG Tray confectionery products are molded from high-strength, glass-reinforced composites. The outstanding physical properties for which these products are known are a result of the synergy of resin matrix and glass reinforcement. Thanks to their strength, composite products may be readily stacked to save space and streamline handling and product storage. Inherent dimensional stability ensures easy integration into automated machinery. MFG Tray products are compression molded from our own sheet-molding compound (SMC), a process

that is ideal for producing medium to high volumes of high-strength, complex parts.

Composite trays and containers are safe for confectionery processing. All materials used in the construction of MFG Tray products are listed in NSF Standard No. 2 and in the USFDA Code of Federal Regulations, Title 21, of the Federal Register, Section 177.2420. MFG Tray starch trays have been independently tested and certified per European Commission Regulation (EU) No 10/2011 for overall migration.

EXCEPTIONAL PERFORMANCE AND DURABILITY

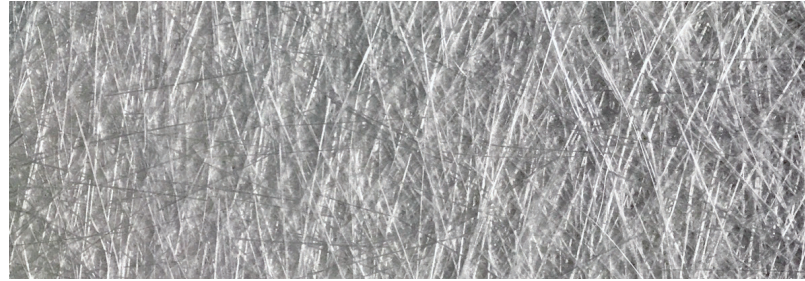
Thanks to their composite design, MFG Tray confectionery products offer inherent strength and weight-carrying capacity resulting in exceptional stacking capability under heavy loads. They are also ideal for machine integration and robotic applications, and can be used continuously in temperatures ranging from -60° to 250° F (-51° to 121° C). Unlike wood, they may be steam cleaned or washed in conventional machines. There are no sharp corners to trap starch or moisture residue.

INCREASE PRODUCTION EFFICIENCY

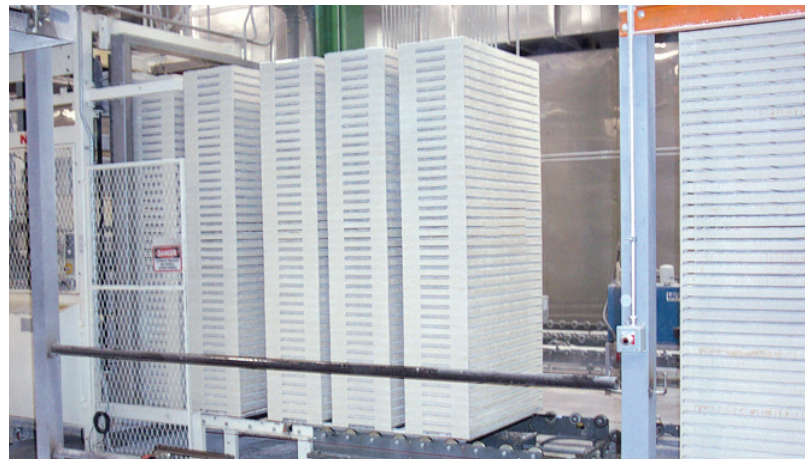
MFG Tray manufactures ventilated drying trays, mogul starch trays, gum trays, holding and work-in-progress trays in a variety of designs and sizes to meet the specific needs of confectionery operations. Starch trays are compatible with Tanis, NID, Makat, Winkler & Dunnebier and other moguls. Uniform sizing and dimensional stability enables increased mogul speeds for optimal throughput and efficiency. They are also interchangeable with wood trays and may be integrated into production lines using both materials.

VARIETY OF SIZES AND CONFIGURATIONS

MFG Tray's high-strength, glass-reinforced composite containers, trays, boxes, flats, and totes proudly serve the confectionery industry, as well as the material handling (metalworking, plastics, and electronics assembly), food service, farming and pharmaceutical industries. The company continually develops customized solutions for specific material-handling challenges and applications. Customers are encouraged to contact MFG Tray to discuss any unique handling and design requirements.



STRENGTH AT THE CORE. Fibers in MFG Tray products are multidirectional or random for optimal tensile and torsion strength of the finished part. Fiber lengths vary from 1" to 2". The composites can contain up to 35 percent of randomly oriented fibers by weight.



THE ADVANTAGES KEEP STACKING UP. MFG Tray starch trays readily integrate with a variety of moguls ensuring unprecedented durability, cleanability, and food product safety. Unlike wood trays, composite trays will not break in the event of a machine jam, eliminating the possibility of wood splinters in the end product. Several confectionery operations using MFG Tray starch trays have noted a resulting five to ten percent increase in production efficiency.



STRENGTH, STABILITY AND DURABILITY.
MFG Tray has been manufacturing confectionery products for over 50 years.



Starch Trays,
Stacked
Model No. 890208



Starch Trays,
Integrated with Wooden Trays
Model No. 890208



THE NEXT "BEST PRACTICE."
Protect your customers and your brand reputation with the frontline prevention that only MFG Tray can provide.

STARCH TRAYS

UNPRECEDENTED DURABILITY AND FOOD PRODUCT SAFETY

- » Available in standard and lightweight formulations
- » Over 70 models offered and custom designs available
- » Expressly designed to integrate with all regular and jumbo-sized moguls
- » Dimensional stability ensures compatibility with high-speed machines
- » Can withstand temperatures -60° to 250°F (-51° to 121°C)
- » Contoured corners will not trap moisture or starch residue
- » Integrates easily with wood trays
- » Stack without sagging or warping

STANDARD COLORS



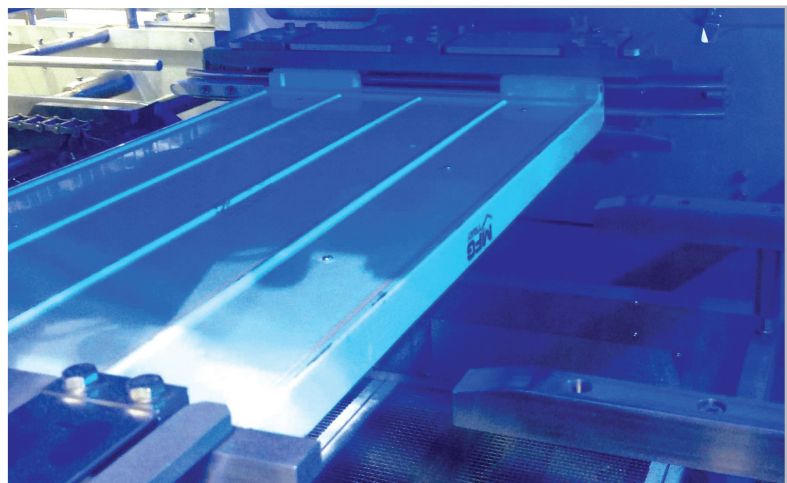
Blue White Pink Gray

NSF *NSF Listed

X-DTect™

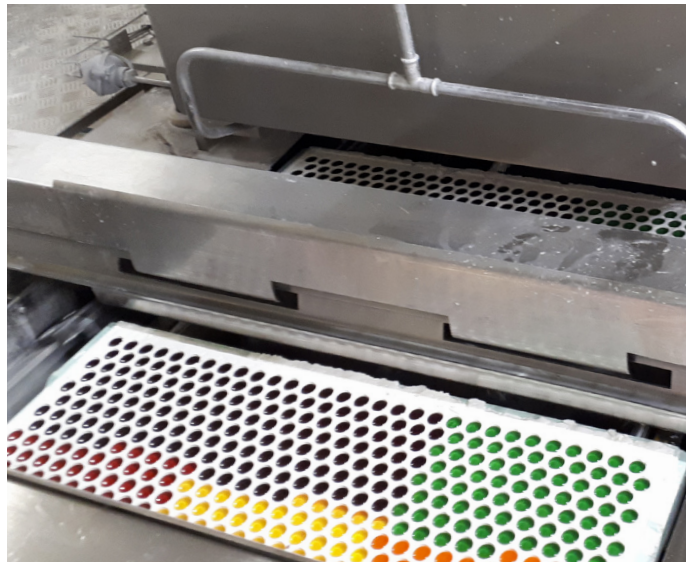
The MFG Tray X-DTect™ is a patent pending composite material made from high-strength, glass-reinforced composites specifically formulated for X-ray detection.

- » Inherent fiberglass strength and durability
- » Can be used continuously in temps ranging from -60° to 250° F (-51° to 121° C)
- » Contaminant detection down to 1 cubic mm
- » Product recall prevention and protection
- » A "best practice" product quality assurance solution
- » EEC Directives 2002/72/EC and amendments up to 2005/79/EC for global migration





These images are courtesy of MFG Tray customers.

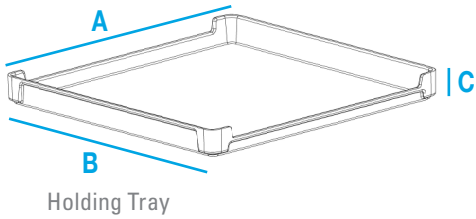


DEPENDABLE PERFORMANCE. The precise sizing and dimensional stability of MFG Tray starch trays contribute to improved mogul efficiency, and the durability of composite construction ensures value and a long service life. The trays are available in a range of sizes to accommodate a variety of starch depths.



HOLDING AND DRYING TRAYS

- » Dropped sides and/or ends promote air circulation and thorough drying
- » Stacking design eliminates the need for tray racks
- » May be steam cleaned or machine washed
- » Smooth, non-porous surface is easily cleaned
- » Heavy duty dolly available
- » Customization available



Holding Tray



Aluminum Dolly

Product Name	Outside Top Dimensions (L x W x H)						Model No.
	A (in)	A (mm)	B (in)	B (mm)	C (in)	C (mm)	
Tray with drop ends	24 1/4	616	24 1/4	616	2 1/4	57	630101
Tray with drop ends	32 3/4	832	24 3/4	629	1 1/2	38	633001
Tray with drop sides	24	610	12	305	2 3/4	70	634008*
Tray with drop end	32	813	24	610	1 3/4	44	641008
Stacking Box, drop sides	30 3/8	772	15 7/8	403	2 7/8	73	805208*
Stacking Box, drop sides	30 3/8	772	15 7/8	403	4 1/8	105	805308*
Stacking Box, drop sides	30 3/8	772	15 7/8	403	3 5/8	92	805408*
Stacking Box, drop sides & ends	30 3/8	772	15 7/8	403	2 7/8	73	805508*
Stacking Box, drop sides	31 7/8	810	15	381	2	51	816001*
Stacking Box, drop sides	35 3/4	908	19 3/4	502	3 3/4	95	894008

STANDARD COLORS



Gray Green White

NSF *NSF Listed



GUM TRAYS

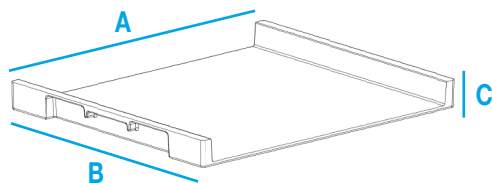
- » Open sides promote air circulation and thorough drying
- » Space-saving stacking design
- » Contoured edges and corners eliminate trapped residue

Product Name	Outside Top Dimensions (L x W x H)						Model No.
	A (in)	A (mm)	B (in)	B (mm)	C (in)	C (mm)	
Tray	22 1/5	564	19	483	1 7/8	48	830008
Tray	22 1/5	564	19	483	2	52	830108

STANDARD COLORS



Blue White



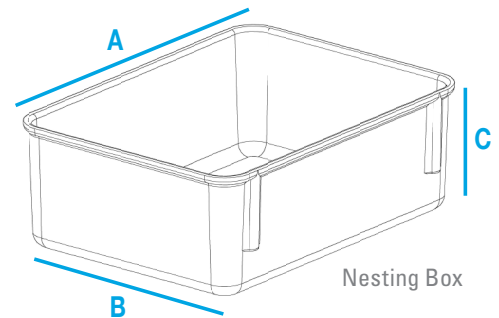
Gum Tray

STOCK BOXES

- » Variety of sizes available for product inventorying and identification
- » Expressly designed for storing candy prior to packing
- » Container lid provides an airtight seal to ensure freshness and sanitation
- » Completely safe for freezing



Product Name	Outside Top Dimensions (L x W x H)						Model No.
	A (in)	A (mm)	B (in)	B (mm)	C (in)	C (mm)	
Nesting Box	11 3/4	298	8 3/4	222	4 1/8	101	920108*
Lid for 920108	11 3/4	298	8 3/4	222	7/16	11	920118
Nesting Box	6 1/8	156	4 7/8	124	2 1/8	54	921108*
Lid for 921108	6 1/8	156	4 7/8	124	1/4	6	921118
Nesting Box	9 3/4	248	6 1/8	156	2 1/8	54	922108*
Lid for 922108 & 926108	9 3/4	248	6 1/8	156	3/8	9	922118
Nesting Box	9 3/4	248	9 1/4	235	4 1/2	114	923108*
Lid for 923108 & 924108	9 3/4	248	9 1/4	235	3/8	9	923118
Nesting Box	9 3/4	248	9 1/4	235	2 1/8	54	924108*
Nesting Box	9 3/4	248	6 1/8	156	4 1/2	114	926108*
Nesting Box	12 3/8	314	9 3/4	248	2 1/8	54	930108*
Lid for 930108	12 3/8	314	9 3/4	248	3/8	9	930118
Nesting Box	11 3/8	289	9 1/4	235	3 1/8	86	940108*
Lid for 940108	11 3/8	289	9 1/4	235	1	25	940118



STANDARD COLORS



*NSF Listed



Model No. 920108, nested with lid

PROTECTION YOUR PRODUCTS DESERVE. MFG Tray stock boxes with lids provide a tight seal to protect products and ensure freshness. Boxes may be stacked to save space and are completely safe for freezing.



MFGT-CF-1.5M-05/2020



Molded Fiber Glass Tray Company

TF 800-458-6050

PH 814-683-4500

FX 814-683-4504

www.mfgtray.com



A Molded Fiber Glass Company



WARNING: This product can expose you to styrene, a chemical known to the State of California to cause cancer. For more information go to www.P65Warnings.ca.gov.